



Utah State Health Surveys Advisory Committee

Jennifer Wrathall

BRFSS Regional Training

October 29, 2009



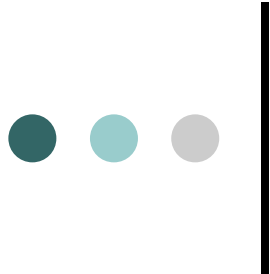
Outline

- Background
- BRFSS Advisory Committee
- Membership
- Charter
- Utah State Health Surveys Advisory Committee
- Voting Membership
- Proposal Process



Background

- State-added questions since 1984
- Utah Healthcare Access Survey came to UDOH in 2003
- Coordinate, not duplicate!



Barry Nangle, PhD
Director
Center for Health Data

Kathryn Marti, RN, MPH
Director
Office of Public Health Assessment

John Jennings
Clerical Support

Kim Neerings
Data Reporting Specialist

UDOH Survey Center

Data Dissemination and Community
Assessment Program

Lynn Startup, MPA
Survey Center
Field Coordinator

Jennifer Wrathall, MPH
Surveys Coordinator

John Jennings
Survey Center
Data Manager

Lin-Marie Wright
Survey Center
Line Supervisor

Interviewers



BRFSS Advisory Committee

- First meeting February 2000
- Agenda and Minutes
- How often to meet?
- How to notify people?
- Staying in touch
- Work groups



Membership

- Bureau of Health Promotion
- Identifying other public health partners
 - Utah universities
 - Community organizations
 - Who else should we invite?
- Email Group
 - Anyone interested



Charter

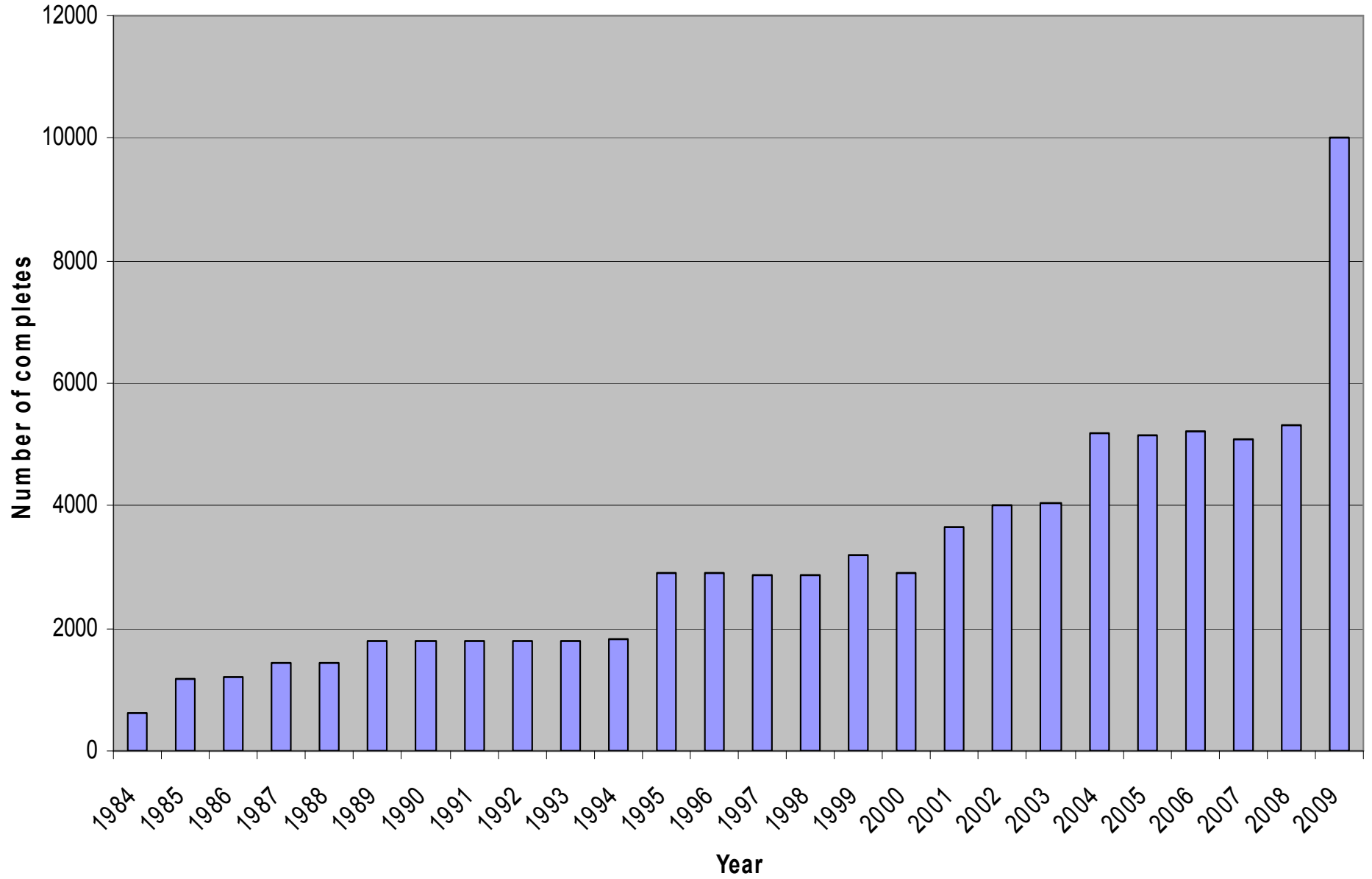
- Started at first meeting
- Promote shared understanding of:
 - Purpose
 - Goal
 - Activities
- Activities specified
 - Develop annual BRFSS questionnaire
 - Make recommendations about analysis & reporting
 - Promote awareness, understanding & use



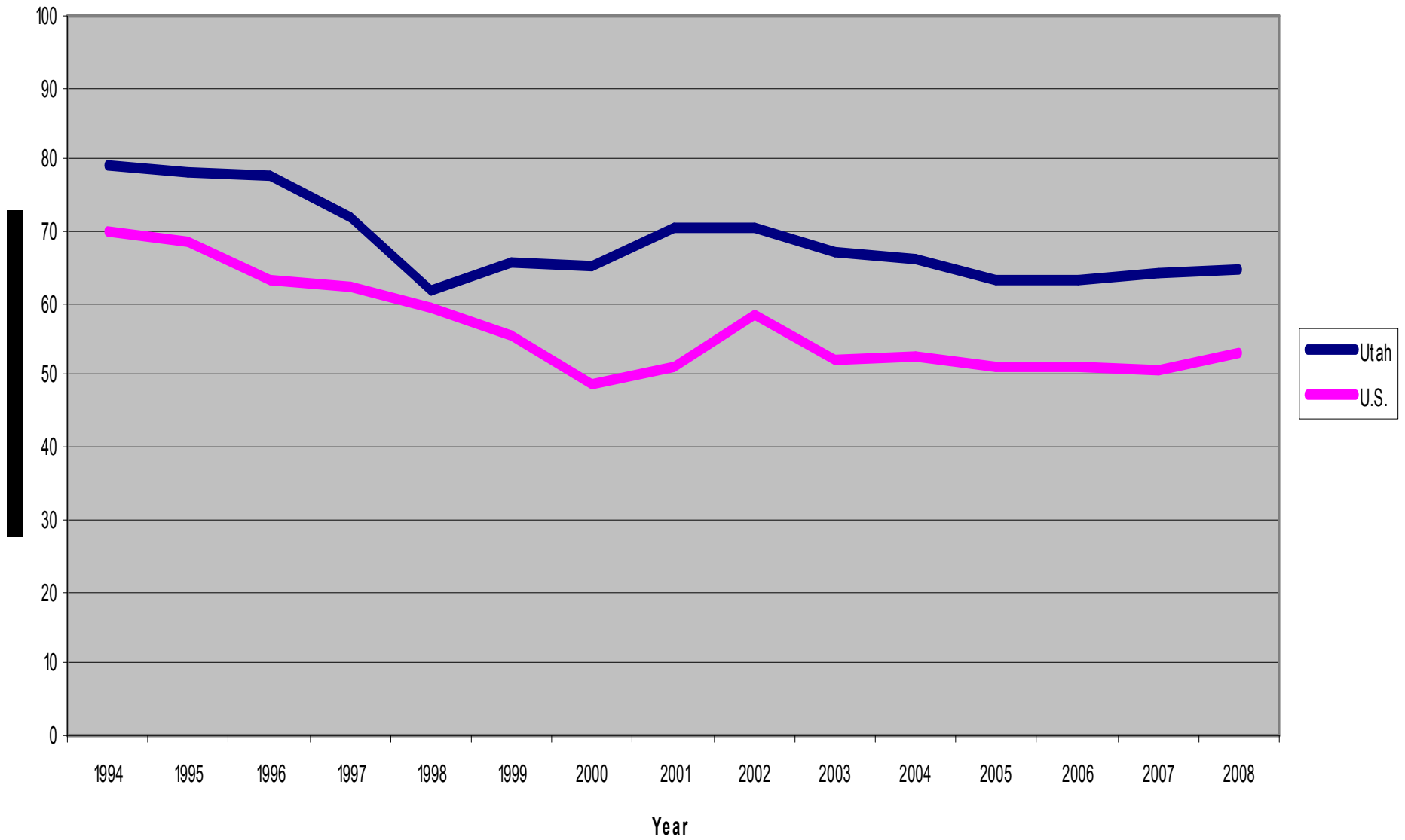
Meeting 1

- Spring/summer
- Survey update
 - Previous year's data
 - Survey length, CASRO, etc
- Next year's survey draft
 - Core items
 - Available optional modules
- Proposal Process
- Cost for state-added questions

Completes per year



BRFSS CASRO Reponse Rates, Utah & U.S. Median, 1994-2008





Meeting 2

- Late summer
- Survey Update
- Overview of proposals submitted

Meeting II: List of Proposals

			BRFSS		
			Men	Women	
Core	Core		87	88	
Optional Modules on Core	Diabetes Module		15	15	
	Random Child Selection		6	6	
	Childhood Asthma Prevalence		2	2	
	Childhood Diabetes Prevalence		1	1	
UHAS	Child Insurance and Access		32	32	
			143	144	
		Questionnaire 1: UHAS	Questionnaire 2		
		Men	Women	Men	Women
Optional Modules	Adverse Childhood Experiences			11	11
	Mental Illness and Stigma			10	10
	Arthritis Management Module			4	4
	Cardiovascular Health Module			4	4
	Actions to Control High BP			10	10
	Heart Attack and Stroke			13	13
	Pre-Diabetes Module			3	3
State-Added Questions	Adult Insurance and Access	35	35		
	HEAT			6	6
	Colon Cancer Screening			4	4
	Cell Phones			2	2
	Fast Food			2	2
	UWIN Health Info Sources			2	2
	Genomics*			4	4
	Hypertension and Chol. Control			3	3
	Child Obesity-related*			5	5
	Adult Obesity-related*			6	6
	Prescription Pain Meds			22	22
	Quality of Life			4	4
	Sexual Violence			6	6
	Substance Abuse			7	7
	Tobacco*			12	12
	Total	178	179	283	284



Meeting 2

- Proposal Presentations
- Q&A
- Voting



Proposal Process

- Outline
- Written proposal
- Presentation at meeting
 - Include examples of data use
 - Take questions
- Voting

**Outline for written proposal to include CDC Modules and/or
State-added questions on the Utah BRFSS:**

- **PROPOSED QUESTIONS** (include any interviewer or other instructions, including skip patterns)

- **BACKGROUND AND SUPPORTING RATIONALE**
- The purpose and goal(s) of the questions
- Relevance to personal behaviors
- Risk groups
- Associations
- Pertinence to Healthy People Objectives and/or other Priority Health Issues
- HP2010 objectives
- Other related objectives
- Are there any alternative data sources/degree to which alternative data source are unsatisfactory.
- Measurement over time or baseline data?
- Relationship to other questionnaire topics:
- History of question development
- Suitability for telephone interviewing
- Expected validity of question.

- **ANALYSIS PLAN**
- What proportion of responds will be asked the question?
- Numerator/Denominator definition.
- Any current analysis and use of data.
- Who will analyze the data?
- Planned analysis? Is it part of your program's data plan? (include examples of graphs and tables).
- How will you change what your program does as a result of the information?



Voting Membership

- Limited voting membership
- Assure broad representation
- Letter of invitation

	Representing	Office/Bureau/Program	Organization	
1	1Health Care Financing	Health Care Finance	UDOH	
2	2Health Systems Improvement		UDOH	
3	3Epi and Lab Services	HIV/AIDS, TB Control, and Refugee Health	UDOH	
4	3Epi and Lab Services	Utah State Epidemiologist	UDOH	
5	4Community and Family Health Services	Bureau of Health Promotion	UDOH	
6	4Community and Family Health Services	Tobacco Prevention and Control Program	UDOH	
7	4Community and Family Health Services	Diabetes Prevention & Control Program	UDOH	
8	4Community and Family Health Services	Children With Special Health Care Needs	UDOH	
9	4Community and Family Health Services	Bureau of Health Promotion	UDOH	
10	4Community and Family Health Services	Asthma and Genomics Programs	UDOH	
11	4Community and Family Health Services	Violence and Injury Prevention Program	UDOH	
12	4Community and Family Health Services	Diabetes Prevention and Control Program	UDOH	
13	4Community and Family Health Services	Maternal and Child Health Bureau	UDOH	
14	5Local Health Departments	LHO, Salt Lake Valley Health Department	LHD	
15	5Local Health Departments	Nursing Director	Summit Co.	
16	5Local Health Departments	Health Educator, Summit County LHD	Summit Co.	
17	6Academic	Dept of Family and Preventative Medicine	UofU	
18	6Academic	Dept of Family and Consumer Studies	UofU, FCS	
19	8Health Care Access Initiatives	Child Health Insurance and Access Initiative	UDOH	
20	10OPHA Dir	OPHA Dir	UDOH	
21	11CHD Dir	Center for Health Data	UDOH	
22	14Community Action Group	Kids Count Project Coordinator	Kids Count	
23	14Community Action Group	Association for Utah Community Health	AUCH	
24	15Insurance Community	Dir Quality Improvement	IHC	
25	15Insurance Community	Utah Insurance Department	Utah Insurance Department	
26	16 Ethnic Communities	Office of Multicultural Health	UDOH	

Utah's 2009 BRFSS Proposals Voting Form

Voting Member Name:

		Rank 1-5	Comments:
Program	Proposal(s)	1= not important 5= very important	
Home Energy Assistance Target Program	Home Energy Questions (HEAT)		
Cancer Program	Colon Cancer Screening		
	Mammogram		
	Cancer Survivorship Module		
	Skin Cancer questions		
Diabetes Program	Diabetes Module w/ State-added questions		
	Pre-Diabetes Module		
	Fast Food Consumption		
	Child Diabetes Prevalence		
	UWIN/Health Information		
	UWIN/Physical Activity & Nutrition		
Violence and Injury Prevention Program	Adverse Childhood Experiences		
	Sexual Violence Questions		
Substance Abuse and Mental Health Program	Substance Abuse Treatment Needs		
Heart Disease and Stroke Prevention Program	Stroke Questions		



Utah Health Surveys Advisory Committee

- Lots of buy-in
- Easy integration
- Promotes dissemination of data
- Not a huge time commitment



Thank you!

Jennifer Wrathall

Utah Department of Health

Survey Coordinator

801-538-9259

jwratha@utah.gov

Please contact me if you'd like a copy of our charter or any other information about our Advisory Committee.